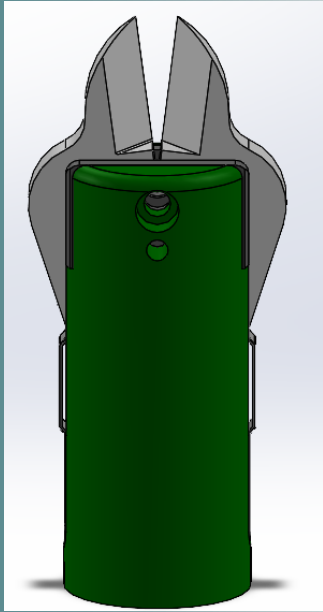
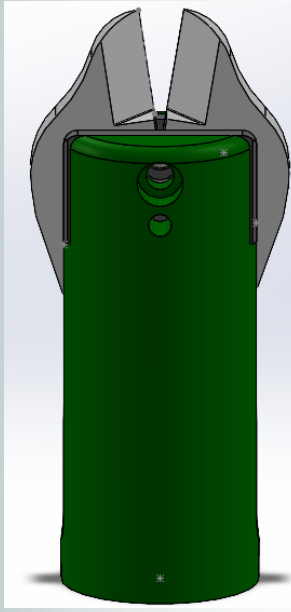


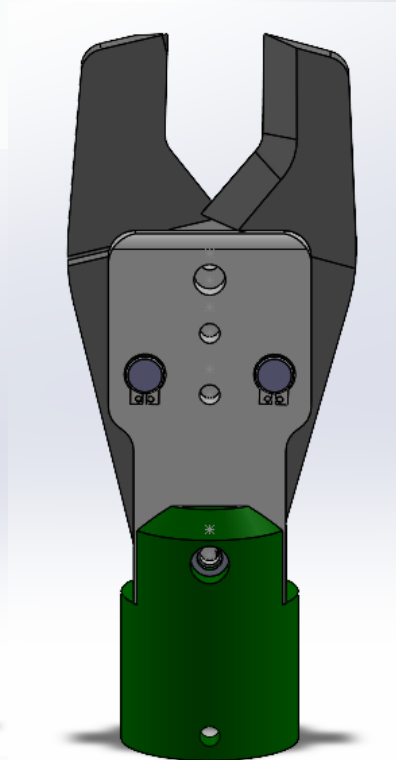
## Cutting Jaws and housings



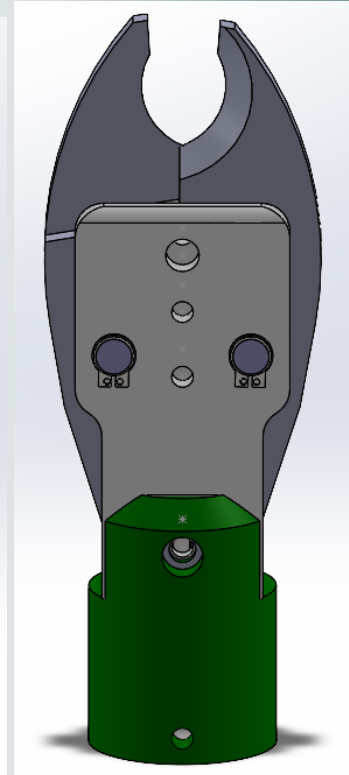
**CP32**



**CP35**



**CPTP938-3**



**CPSA2000**

| PART NUMBER             | CP32                | CP35               | CPSA2000                              | CPTP938-3                             |
|-------------------------|---------------------|--------------------|---------------------------------------|---------------------------------------|
| CUTTING                 | STRAIGHT            | STRAIGHT           | FOR CUTTING COPPER CABLE              | FOR CUTTING COPPER CABLE              |
| JAW HOUSING LENGTH      | 4 3/16"             | 4 3/16"            | 4 3/16"                               | 4 3/16"                               |
| TOTAL LENGTH            | 5 5/16"             | 4 15/16"           | 6 15/16"                              | 7 3/16"                               |
| WEIGHT                  | 1 LB 6 OZ           | 1 LB 4OZ           | 2 LB 2 OZ                             | 2 LB 4 OZ                             |
| HOUSING DIA.            | 1 3/4"              | 1 3/4"             | 1 3/4"                                | 1 3/4"                                |
| JAW OPENING             | 1/2"                | 5/16"              | 21/32                                 | 1"                                    |
| TYPE OF CUT             | SIDE CUT            | SIDE CUT           | UP TO 5/8 STRANDED COPPER WIRE (SOFT) | UP TO 3/4 STRANDED COPPER WIRE (SOFT) |
| TO BE USED WITH AIRPACK | CP400, CP500, CP800 | CP400, CP500 CP800 | CP400, CP500, CP800                   | CP400, CP500, CP800                   |